



## PILOT AIR VALVE, 501-4A

URL: <https://www.sxplc.com/pilot-air-valve-501-4a>

### Product data sheet

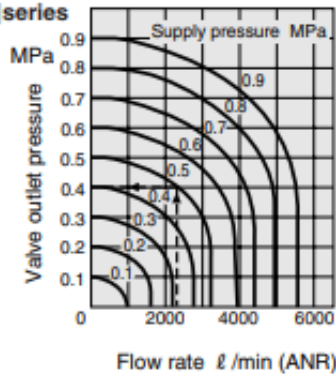
#### Specifications

Item	Basic model	A type (normal type)					AA type (internal pilot holding type)	
		375-4A	501-4A	750-4A	1000-4A	1250-4A	375-4AA	501-4AA
Port size Rc	Main	3/8	1/2	3/4	1	1 1/4	3/8	1/2
	Pilot	1/8		1/4			1/8	
Effective area [Cv]	mm <sup>2</sup>	50 [2.5]		100 [5]	240 [12]		50 [2.5]	
Media		Air						
Operating pressure range MPa [kgf/cm <sup>2</sup> ] [psi.]	Main	0~0.9 [0~9.2] [0~131]					0.1~0.9 [1.0~9.2] [15~131]	
	Pilot	See the table "Minimum Pilot Pressure"					0.1~0.9 [1.0~9.2] [15~131] (Use at the same pressure as the main pressure)	
Proof pressure	MPa [kgf/cm <sup>2</sup> ] [psi.]	1.35 [13.8] [196]						
Operating temp. range (atmosphere and media)	°C [°F]	0~60 [32~140]						
Maximum operating frequency	Hz	6		3	4		6	
Lubrication		Required (Turbine Oil Class 1 (ISO VG32) or equivalent)						
Mass	kg [lb.]	0.9 [2.0]		3.4 [7.5]	4.7 [10.4]		0.9 [2.0]	

Note: When excessively throttling the R port for use, set the pilot pressure at the main pressure or higher.

#### 375-4□ series

#### 501-4□ series



- 375-4A
- 375-4AA
- 501-4A
- 501-4AA

